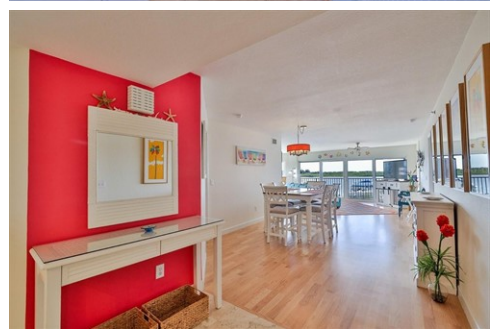
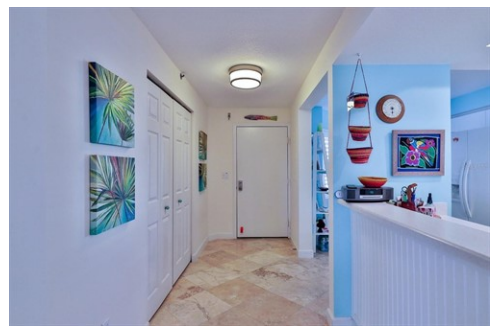




\$ 1,030,000



2700 N Peninsula Ave # 3230, New Smyrna Beach, FL 32169

- » Beds: 3 | Baths: 2 Full
- » MLS #: NS1080755
- » Condominium | 1,792 ft<sup>2</sup> | Lot: 2,912 ft<sup>2</sup>
- » More Info: [2700NPeninsulaAve3230.IsForSale.com](https://www.2700NPeninsulaAve3230.IsForSale.com)



**Donna Concannon**  
 NSB Luxury & Lifestyle Group  
 (386) 235-8588 (Donna)  
 (386) 453-6017 (David)  
 Donna@NSBHOMES.COM  
<https://www.nsbhomes.com/staff/donna-concannon>



Coastal Living at its best at the Inlet Marina Vilas Condominium & Marina. Inlet Marina Villas and Marina is a Gated Riverfront Haven located in the Hamlet of North Beach, New Smyrna. Come discover Riverfront Living with Spectacular Views of the Intracoastal, Disappearing Island, Coast Guard Station, the famous Ponce DeLeon Lighthouse & SUNSETS! Inlet Marina Villas & Marina allows Intracoastal Access from your private 64-Slip Marina with the Inlet at Ponce only a short ride away from your Fishing destination. This is a RARE OPPORTUNITY to own a Beautiful Captains Quarters Unit; 3 Bedroom 2 Bathroom Unit offering Panoramic Views of Intracoastal and Pool on its Flank. Step inside to this light-filled Open Floor Plan decorated in Coastal Chic reflecting Riverfront living at its best. Unit 323 comes with REAL WOOD FLOORS and tiled Bathrooms. Unit 323 has 3 well-appointed Bedrooms to accommodate your family and guests. A very spacious Master Suite overlooks the Intracoastal Waterway with ensuite, updated Master Bathroom & Walk In closet makes this Condo a one of a kind. Bedrooms 2 & 3 are so comfy and cozy your guests may never leave. The Kitchen comes with an Eat-in Kitchen Breakfast Bar making the flow of entertainment seamless. The adjacent Living, Dining Rooms all face the incredible Intracoastal and Sunset Views that Unit 323 has to offer. Every Sunset becomes a Community event at this complex. This unit has had all Windows

